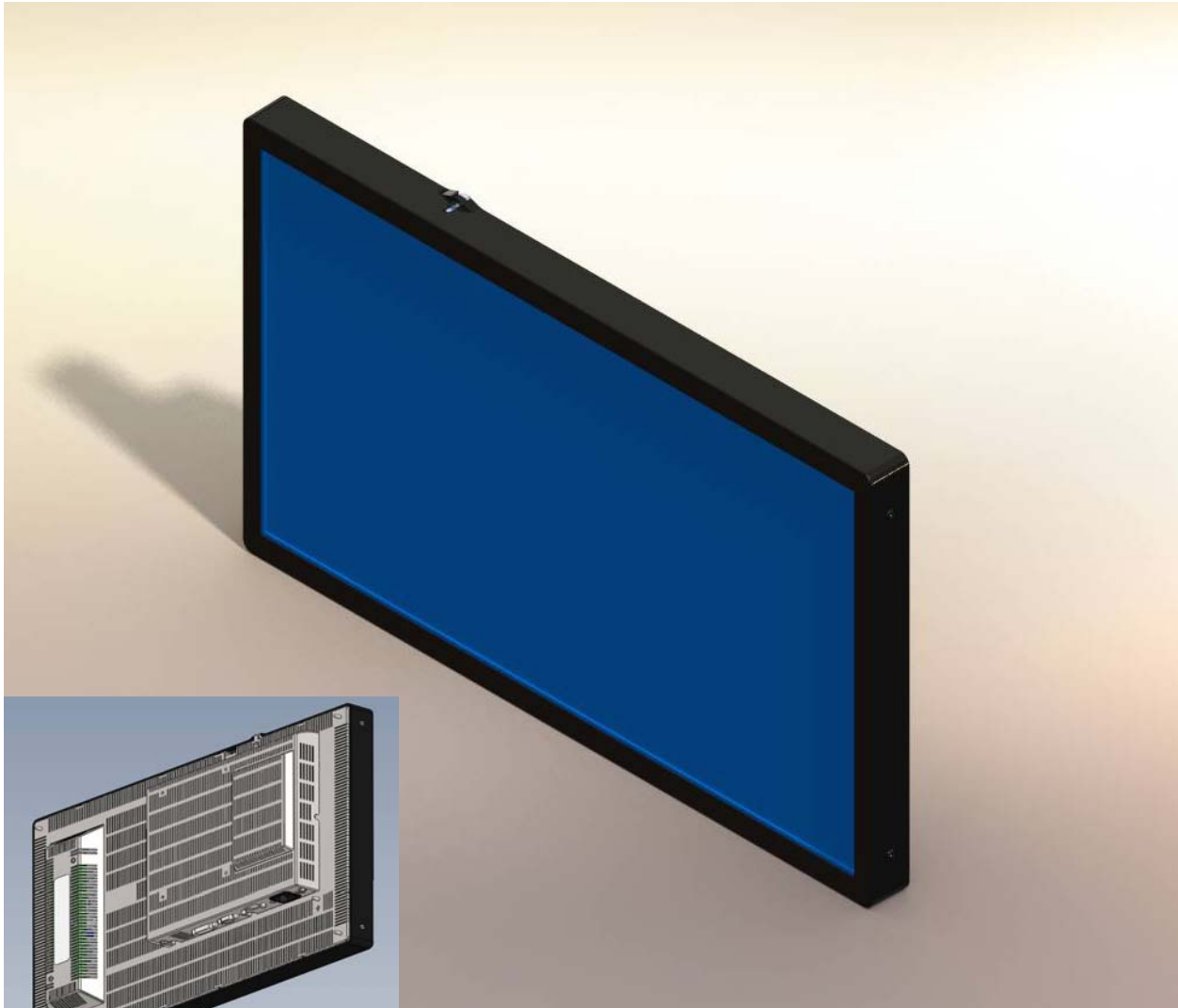


# 21.5 INCH LCD MONITOR

WIDE FORMAT (16:9)



21.5" LCD Monitor with a bright, high contrast image. Compact steel enclosure allows for flexible mounting possibilities. Can be supplied with Touch Sensor & Controller or Glass panel.


## MODEL 2105-LCD 21.5 INCH LCD

- 1920 x 1080 Native Resolution
- Wide Viewing Angle (178° in all directions)
- 250 nits (cd/m<sup>2</sup>)
- 1000:1 Contrast Ratio
- 16.7 Million Colors
- 21.5" Viewable Image Size
- Analog and Digital Inputs
- 90 to 264VAC Operation
- Operational in 70° C Environments
- IR Remote and Button Pad controls.



## CERONIX

13350 NEW AIRPORT ROAD  
AUBURN, CA 95602  
P 530.886.6400  
F 530.888.1065  
WWW.CERONIX.COM

Specifications	
<b>Panel</b>	a-si TFT Active Matrix, IPS (In-Plane Switching) Mode
<b>Viewable Size</b>	21.46"
<b>Native Resolution</b>	1920 x 1080
<b>Aspect Ratio</b>	16:9
<b>Pixel Size (mm)</b>	0.2475(H) x 0.2475(W)
<b>Brightness (Typical)</b>	250 cd/m <sup>2</sup>
<b>Contrast Ratio</b>	1000:1
<b>Response Time (Gray to Gray)</b>	14mS
<b>Colors Supported</b>	16.7 Million
<b>Viewing Angle</b>	178° in Horizontal and Vertical Directions
<b>Interface</b>	Analog & Digital
<b>Input Connectors</b>	RGB 15-Pin D-Sub, DVI-D
<b>Frequency</b>	31.5-80KHz Horizontal, 56-75Hz Vertical
<b>Power Consumption</b>	35 Watts, 90 - 264VAC, 50/60Hz
<b>Dimensions (W x H x D)</b>	19.901" x 11.901" x 2.806"
<b>Environment</b>	Operational 0° to 70°C, Humidity 5% to 90% Non-Condensing
<b>Agency Certifications</b>	 <p>TUV: Manufactured under a quality management system, certified to ISO 9001 (Certificate Registration Number 950 99 0571)</p>

